



TECHNICAL MANUAL

TIM-3 Bioassay

Instructions for Use of Products
JA2211 and JA2215

TIM-3 Bioassay

All technical literature is available at: www.promega.com/protocols/
 Visit the website to verify that you are using the most current version of this Technical Manual.
 Email Promega Technical Services if you have questions on use of this system: techserv@promega.com

1. Description	2
2. Product Components and Storage Conditions	8
3. Before You Begin	9
4. Assay Protocol	10
4.A. Preparing Assay Buffer and Antibody Samples	10
4.B. Plate Layout Design	12
4.C. Preparing and Adding Antibody Serial Dilutions	12
4.D. Preparing TIM-3 Effector and Target Cells	13
4.E. Preparing and Adding Bio-Glo-NL™ Reagent	14
4.F. Data Analysis	15
5. Troubleshooting	16
6. References	17
7. Appendix	18
7.A. Representative Assay Results	18
7.B. Composition of Buffer	19
8. Summary of Changes	19



1. Description

The human immune system is regulated by a complex network of inhibitory and stimulatory receptors that facilitate the elimination of pathogens, while maintaining tolerance to self-antigens. Inhibitory immune checkpoint receptors perform critical roles in the maintenance of immune homeostasis, but they also have a significant role in cancer progression and autoimmune disease. Multiple immune checkpoint receptors such as programmed cell death protein 1 (PD-1), cytotoxic T-lymphocyte associated protein 4 (CTLA-4), T cell immunoreceptor with immunoglobulin and immunoreceptor tyrosine-based inhibitory motif (TIGIT), lymphocyte activation gene-3 (LAG-3) and T-cell immunoglobulin and mucin-domain containing-3 (TIM-3) have been identified. Blocking these receptors with monoclonal antibodies is an effective strategy to enhance anti-tumor immune responses and promote immune-mediated tumor rejection (1,2).

TIM-3 (CD366, HAVCR2) is an immune checkpoint receptor expressed on a subset of activated T cells, regulatory T cells (Tregs), macrophages and dendritic cells. Preclinical studies have shown that TIM-3 signaling regulates Th1 cytokine responses, and that expression of TIM-3 is associated with resistance to autoimmunity. Consistent with these observations, blockade of TIM-3 leads to tumor rejection in mouse models of colorectal and ovarian cancer (3,4). While the *in vivo* effects of TIM-3 are clear, the cellular events leading to these outcomes are not understood. There is a growing body of literature suggesting a context- and cell type-dependent role for TIM-3 in T-cell activation that is more complex than reported previously. It is now evident that TIM-3 has the capacity to inhibit or costimulate T-cell receptor (TCR) signaling in different *in vitro* systems (5,6). Moreover, the identities and functional relevance of ligands for TIM-3 have long been the subject of intense scientific debate. Phosphatidylserine (PS), galectin-9, CEACAM-1 and others have been proposed as TIM-3 ligands (7–10), adding another layer of complexity to TIM-3 signaling.

Current methods used to measure the activity of drugs targeting TIM-3 rely on primary human T cells and measurement of functional endpoints such as cell proliferation, cell surface marker expression and cytokine production. These assays are laborious and highly variable due to their reliance on donor primary cells, complex assay protocols and unqualified assay reagents. As a result, these assays are difficult to establish in a quality-controlled drug development setting.

The TIM-3 Bioassay (Cat.# JA2211, JA2215)^(a-d), is a bioluminescent reporter cell-based assay that overcomes the limitations of existing assays and can be used to measure the potency and stability of antibodies and other biologics targeting TIM-3 (11). The assay consists of two cell lines:

- **TIM-3 Effector Cells:** Human T cells genetically engineered to express human TIM-3 and a NanoLuc[®] luciferase reporter driven by T cell activation pathway-dependent response elements
- **TIM-3 Target Cells:** MHCII-positive human cell line

The TIM-3 Effector and TIM-3 Target Cells are provided in thaw-and-use format as cryopreserved cells that can be thawed, plated and used in an assay without the need for cell culture and propagation.

When the two cell types are cocultured, TIM-3 Target Cells provide low-level stimulation to the TIM-3 Effector Cells through the TCR. TIM-3 is engaged and activated by its ligands, including PS, which is present on both Effector and Target cells. The combined stimulation of the TCR and TIM-3 induces promoter-mediated luciferase activation and luminescence. Adding a TIM-3 blocking antibody prevents TIM-3 signaling and reduces promoter-mediated luminescence (Figure 1). The luminescent signal is quantified using the Bio-Glo-NL[™] Luciferase Assay System, and a standard luminometer such as the GloMax[®] Discover System. In the TIM-3 Effector Cells, we find increased IL-2 reporter activity and secretion compared to the parental cell line (data not shown). This elevated IL-2 reporter activity can be suppressed to parental cell line levels by adding TIM-3 antibody. The assay is therefore in agreement with the literature suggesting a costimulatory function for TIM-3.

In addition to the TIM-3 Bioassay, we offer the Control Ab, Anti-TIM-3 (Cat. # K1210) blocking antibody for use as a positive control.

The TIM-3 Bioassay reflects the mechanism of action (MOA) of biologics designed to block TIM-3 signaling. Specifically, TCR activation-mediated luminescence is reduced following the addition of anti-TIM-3 blocking Ab but not following the addition of anti-PD-1 (nivolumab), anti-CTLA-4 (ipilimumab), anti-TIGIT or anti-LAG3 blocking antibodies (Figure 2).

PS and galectin-9 are both endogenously present on the cell surface of TIM-3 Effector and Target Cells (data not shown). Studies with anti-PS or anti-galectin-9 blocking antibodies demonstrated that anti-PS, but not anti-galectin-9 specifically blocked TIM-3 signaling and reduced luciferase reporter activity in TIM-3 Effector cells (Figure 3).

The TIM-3 Bioassay is prequalified according to International Council for Harmonisation of Technical Requirements for Pharmaceuticals for Human Use (ICH) guidelines and shows the precision, accuracy and linearity required for routine use in potency and stability studies (Table 1 and Figure 4). The bioassay can be performed in a two-day time frame. The bioassay workflow is simple and robust, and compatible with both 96- and 384-well-plate formats used for antibody screening in early drug discovery (Figure 5). In addition, the bioassay can be used in the presence of human serum, indicating potential for further development into a neutralizing antibody bioassay. Because there is some loss of light output in the presence of high concentrations of human serum, we recommend that samples be diluted for this application (Figure 6).

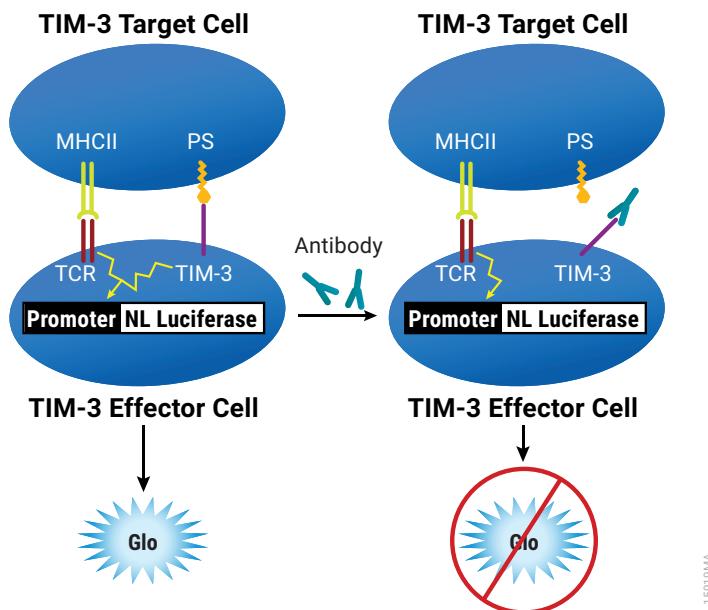


Figure 1. Representation of the TIM-3 Bioassay. The bioassay consists of two cell lines, TIM-3 Effector Cells and TIM-3 Target Cells. When cocultured, TIM-3 costimulates TCR pathway-activated luminescence of NanoLuc® luciferase (Nluc). Adding Anti-TIM-3 antibody blocks TIM-3 binding to ligands, including PS, resulting in reduced TCR pathway activation, which can be detected in a dose-dependent manner by adding Bio-Glo-NL™ Reagent and quantitated with a luminometer.

1. Description (continued)

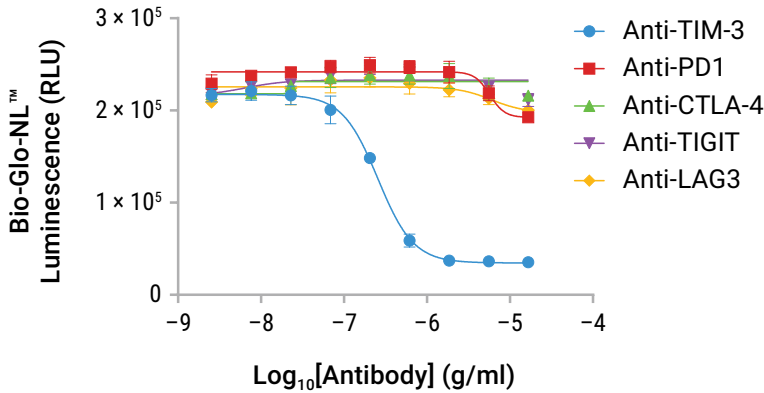


Figure 2. The TIM-3 Bioassay reflects the mechanism of action (MOA) and specificity of biologics designed to block TIM-3 signaling. TIM-3 Effector Cells were incubated with TIM-3 Target Cells in the presence of serial titrations of blocking Abs as indicated: Control Ab, Anti-TIM-3 (Cat. # K1210), anti-LAG-3 (Cat. # K1150), Control Ab, Anti-TIGIT (Cat. # J2051), anti-PD-1 (nivolumab) or anti-CTLA-4 (ipilimumab) blocking antibodies. After a 20-hour induction, Bio-Glo-NL™ Reagent was added, and luminescence quantified using the GloMax® Discover System. Data were fitted to a four-parameter logistic curve using GraphPad Prism® software. Data were generated using thaw-and-use cells.

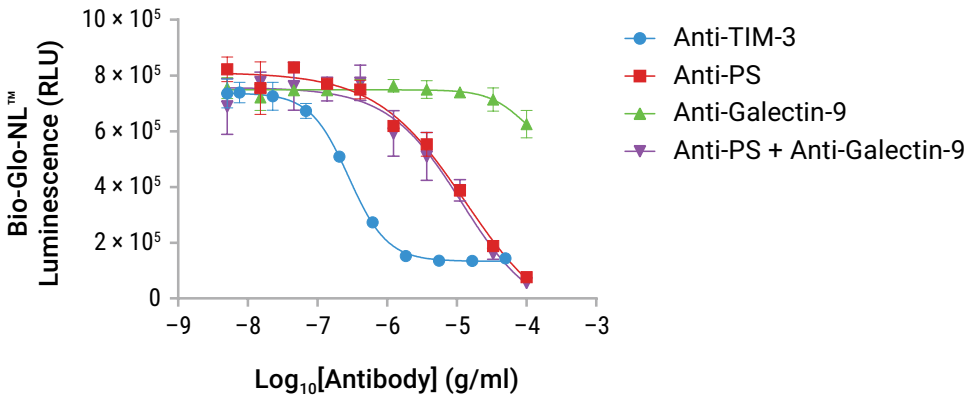


Figure 3. TIM-3 Bioassay is dependent on PS but not galectin-9. The TIM-3 Bioassay was performed as described in this technical manual, using Control Ab, Anti-TIM-3 (Cat. # K1210), or commercial antibodies against PS (Clone 1H6) and galectin-9 (Clone 9M1-3). Blockade of PS resulted in suppression of reporter activity similar to that seen with anti-TIM-3, while blockade of galectin-9 showed little effect, alone or in combination with anti-PS. Data were generated using thaw-and-use cells.

Table 1. The TIM-3 Bioassay Shows Precision, Accuracy and Linearity.

Parameter	Results	
Accuracy	Percent Expected Relative Potency	Percent Recovery
	50	102.6
	70	100.2
	100	97.7
	130	99.8
	150	107.7
Repeatability (% CV)	100% (Reference)	12.9
Intermediate Precision (% CV)		13.4
Linearity (r ²)		0.904
Linearity (y = mx + b)		y = 1.078x - 3.277

A 50–150% theoretical potency series of Control Ab, Anti-TIM-3, was analyzed in triplicate in three independent experiments performed on three days by two analysts. Bio-Glo-NL™ Reagent was added and luminescence from the NanoLuc® luciferase reporter quantified using the GloMax® Discover System. Data were analyzed, and relative potencies calculated after parallelism determination using JMP® software. Data were generated using thaw-and-use cells.

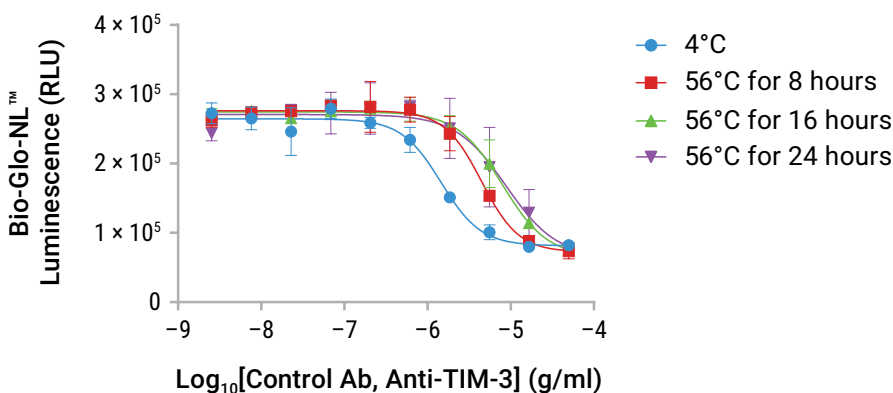


Figure 4. The TIM-3 Bioassay is stability-indicating. Samples of Control Ab, Anti-TIM-3, were maintained at 4°C (control) or heat-treated at 56°C for the indicated times, then analyzed using the TIM-3 Bioassay. Bio-Glo-NL™ Reagent was added, and luminescence quantified using the GloMax® Discover System. Data were fitted to a four-parameter logistic curve using GraphPad Prism® software. Data were generated using thaw-and-use cells.

1. Description (continued)

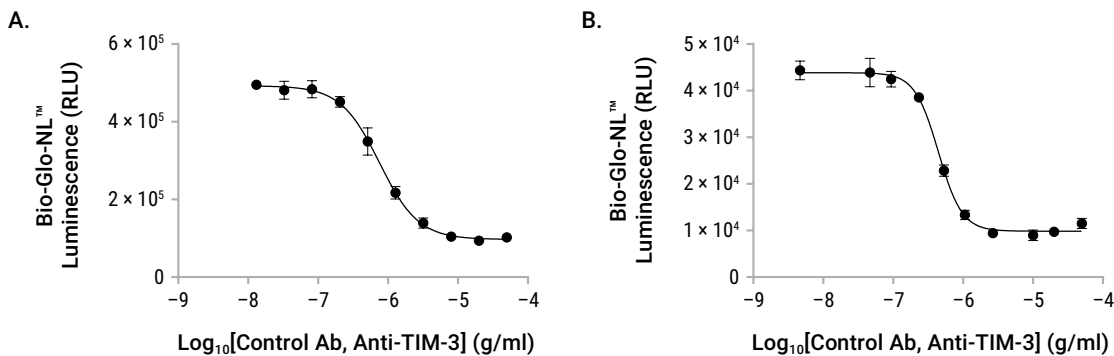
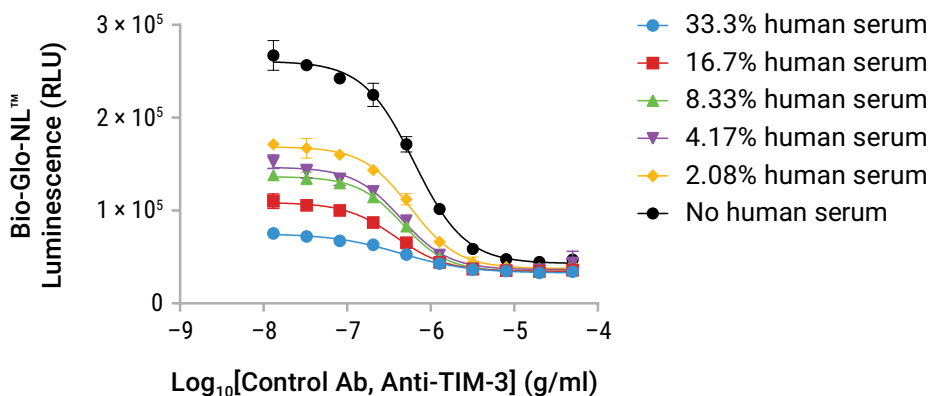


Figure 5. The TIM-3 Bioassay is amenable to 384-well plate format. Panel A. The TIM-3 Bioassay was performed in 96-well plates as described in this technical manual with a titration of Control Ab, Anti-TIM-3. **Panel B.** The TIM-3 Bioassay was performed in 384-well format using a MANTIS[®] liquid handler to dispense the cells. TIM-3 Effector Cells (10µl) were dispensed at 2 × 10⁴ cells/well. Next, 10µl of TIM-3 Target Cells were added at 2 × 10⁴ cells/well. Finally, 10µl of Control Ab, Anti-TIM-3, was added each well. The assay plate was incubated overnight in a 37°C, 5% CO₂ incubator. After a 20-hour incubation, 30µl of Bio-Glo-NL[™] Reagent was added to each well, and luminescence quantified using the GloMax[®] Discover System. Data were fitted to a four-parameter logistic curve using GraphPad Prism[®] software. The IC₅₀ values were 754ng/ml and 443ng/ml, and the maximum inhibitions were 80% and 78% for the 96- and 384-well-plate format, respectively. Data were generated using thaw-and-use cells.



15924MA

Figure 6. The TIM-3 Bioassay may be affected by human serum. Control Ab, Anti-TIM-3, was analyzed in the absence or presence of increasing concentrations of pooled normal human serum (0–100% in the antibody sample), resulting in final assay concentration of human serum (0–33.3%). Bio-Glo-NL™ Reagent was added, and luminescence quantified using the GloMax® Discover System. Data were fitted to a four-parameter logistic curve using GraphPad Prism® software. The TIM-3 Bioassay showed reduced light output in the presence of this human serum pool. A different human serum pool showed similar effects on the assay (data not shown). Data were generated using thaw-and-use cells.



2. Product Components and Storage Conditions

PRODUCT	SIZE	CAT.#
TIM-3 Bioassay	1 each	JA2215

Not for Medical Diagnostic Use. Includes:

- 1 vial TIM-3 Effector Cells (0.5ml)
- 1 vial TIM-3 Target Cells (0.9ml)
- 36ml RPMI 1640 Medium
- 4ml Fetal Bovine Serum
- 10ml Bio-Glo-NL™ Luciferase Assay Buffer
- 200µl Bio-Glo-NL™ Luciferase Assay Substrate

PRODUCT	SIZE	CAT.#
TIM-3 Bioassay 5X	1 each	JA2215

Not for Medical Diagnostic Use. Includes:

- 5 vials TIM-3 Effector Cells (0.5ml)
- 5 vials TIM-3 Target Cells (0.9ml)
- 5 × 36ml RPMI 1640 Medium
- 5 × 4ml Fetal Bovine Serum
- 5 × 10ml Bio-Glo-NL™ Luciferase Assay Buffer
- 5 × 200µl Bio-Glo-NL™ Luciferase Assay Substrate

Note: The TIM-3 Bioassay components are shipped separately because of different temperature requirements. The TIM-3 Effector Cells and TIM-3 Target Cells are shipped on dry ice. The Bio-Glo-NL™ Luciferase Assay System and Fetal Bovine Serum are shipped on dry ice, separately from the cells. The RPMI 1640 Medium is shipped at ambient temperature.

Storage Conditions:

- Upon arrival, immediately transfer the cell vials to below -140°C (freezer or liquid nitrogen vapor phase) for long-term storage. Do not store cell vials submerged in liquid nitrogen. **Do not** store cell vials at -80°C as this will negatively affect cell viability and performance.
- Store Bio-Glo-NL™ Luciferase Assay Buffer, Bio-Glo-NL™ Luciferase Assay Substrate and Fetal Bovine Serum at -30°C to -10°C . Avoid multiple freeze-thaw cycles of the serum.
- We recommend preparing Bio-Glo-NL™ Reagent immediately before use. Do not store and use the reconstituted reagent.
- Store RPMI 1640 Medium at $+2^{\circ}\text{C}$ to $+10^{\circ}\text{C}$ protected from fluorescent light.

3. Before You Begin

Please read through the entire protocol to become familiar with the components and the assay procedure before beginning.

Note the catalog number and lot number from the cell vial box label. This information can be used to download documents for the specified product from the website such as the Certificate of Analysis.

The TIM-3 Bioassay is intended to be used with user-provided antibodies or other biologics designed to block the interaction of TIM-3 with its ligands. Control Ab, Anti-TIM-3 (Cat.# K1210), is available separately for use in assay optimization and routine quality control. We strongly recommend including Control Ab, Anti-TIM-3, as a positive control in the first few assays to gain familiarity with the bioassay. Data generated using Control Ab, Anti-TIM-3, is shown in Section 7.A, Representative Assay Results.

TIM-3 Effector Cells and TIM-3 Target Cells are provided in frozen, thaw-and-use format and are ready to be used without any additional culture or propagation. When thawed and diluted as instructed, the cells will be at the appropriate concentration for the assay. The cells are sensitive, and care should be taken to follow cell thawing and plating procedures as described in Section 4.D.

The TIM-3 Bioassay produces a bioluminescent signal and requires a luminometer or luminescence plate reader for the detection of luminescence. Bioassay development and performance data included in this Technical Manual were generated using the GloMax® Discover System. An integration time of 0.5 second/well was used for all readings. Relative luminescence unit readings will vary with the sensitivity and settings of each instrument. If using a reader with adjustable gain, we recommend a high-gain setting. The use of different instruments and gain adjustment will affect the magnitude of the raw data, but should not affect the measured relative potency of test samples.

3.A. Materials to Be Supplied by the User

(Composition of buffer is provided in Section 7.B.)

- user-defined anti-TIM-3 antibodies or other biologics
- white, flat-bottom, tissue culture-treated 96-well assay plates (e.g., Corning® Cat.# 3917)
- sterile, clear V-bottom 96-well plate with lid (e.g., Costar® Cat.# 3896 or Linbro Cat.# 76-223-05) for preparing antibody dilutions
- pipettes (single-channel and 12-channel); for best results use both manual and electronic pipettes as needed
- sterile 15ml and 50ml conical tubes
- sterile reagent reservoirs (e.g., Corning Cat.# 4870)
- 37°C, 5% CO₂ incubator
- 37°C water bath
- plate reader with glow luminescence measuring capability or luminometer (e.g., GloMax® Discover System or equivalent)
- **optional:** Control Ab, Anti-TIM-3 (Cat.# K1210)

4. Assay Protocol



Follow institutional guidelines for handling, including use of personal protective equipment (PPE) and waste disposal for biohazardous material.

This assay protocol illustrates the use of the TIM-3 Bioassay to test two antibody samples against a reference sample in a single assay run. Each test and reference antibody is run in triplicate, in a ten-point dilution series for a single 96-well assay plate using the inner 60 wells. Other experimental and plate layouts are possible but may require further optimization.

Note: When preparing test and reference antibodies, choose an appropriate starting concentration and dilution scheme to achieve a full dose-response curve with upper and lower asymptotes and sufficient points on the slope. For reference, we use 50µg/ml of Control Ab, Anti-TIM-3, as a starting concentration (1X) and a 2.5-fold dilution series.

4.A. Preparing Assay Buffer and Antibody Samples

1. **Assay Buffer:** On the day of the assay, prepare an appropriate amount of assay buffer (95% RPMI 1640/5% FBS). Thaw the FBS overnight at 4°C or in a 37°C water bath on the day of use. Mix well and warm to 37°C prior to use. For reference, 30ml of assay buffer is typically sufficient for 120 wells in a 96-well assay format using the inner 60 wells.

Note: The recommended assay buffer contains 5% FBS. This concentration of FBS works well for the anti-TIM-3 antibodies we have tested. If you experience assay performance issues when using this assay buffer, we recommend testing different serum concentrations in the range of 0.5–10%.

2. **Bio-Glo-NL™ Reagent:** For reference, 10ml of reconstituted Bio-Glo-NL™ Reagent is sufficient to assay 120 wells in a 96-well assay format. The Bio-Glo-NL™ Luciferase Assay Substrate should always be stored at –20°C. Thaw the Bio-Glo-NL™ Luciferase Assay Buffer at room temperature (do not exceed 25°C) during the 16–24 hour induction period of the assay. We recommend preparing the reconstituted Bio-Glo-NL™ Luciferase Assay Reagent immediately before use.



Note: The TIM-3 Bioassay is compatible only with the Bio-Glo-NL™ Luciferase Assay Reagent. **Do not** use the Bio-Glo™ Luciferase Assay Reagent (Cat. # G7940, G7941) with the TIM-3 Bioassay.

3. **Test and Reference Samples:** Using assay buffer as the diluent, prepare starting dilutions (dilu1, 3X final concentration) of two test antibodies (200µl each) and one reference antibody sample (400µl) in 1.5ml tubes. Store the tubes containing antibody starting dilutions appropriately before making antibody serial dilutions.

Note: If you are using Control Ab, Anti-TIM-3, as a reference in your assay, prepare 400µl at 150µg/ml for the starting dilution (dilu1, 3X final concentration) by adding 60µl of Control Ab, Anti-TIM-3 stock (1mg/ml), to 340µl of assay buffer.

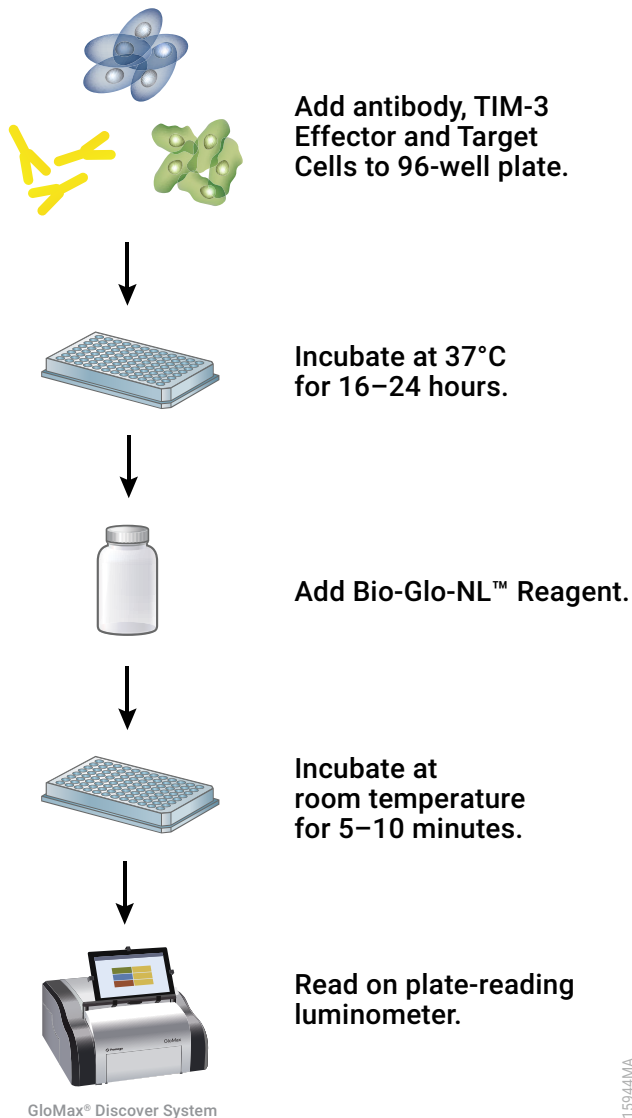


Figure 7. Schematic protocol for the TIM-3 Bioassay.

4.B. Plate Layout Design

For the protocol described here, use the plate layout illustrated in Figure 8 as a guide. The protocol describes serial replicate dilutions (n = 3) of test and reference antibodies to generate a ten-point dose-response curves for each antibody.

Recommended Plate Layout Design														
	1	2	3	4	5	6	7	8	9	10	11	12		
A	B	B	B	B	B	B	B	B	B	B	B	B	B	Assay Buffer (B)
B	B	no Ab	dilu9	dilu8	dilu7	dilu6	dilu5	dilu4	dilu3	dilu2	dilu1	B	Reference Ab	
C	B	no Ab	dilu9	dilu8	dilu7	dilu6	dilu5	dilu4	dilu3	dilu2	dilu1	B	Test Ab	
D	B	no Ab	dilu9	dilu8	dilu7	dilu6	dilu5	dilu4	dilu3	dilu2	dilu1	B	Reference Ab	
E	B	no Ab	dilu9	dilu8	dilu7	dilu6	dilu5	dilu4	dilu3	dilu2	dilu1	B	Test Ab	
F	B	no Ab	dilu9	dilu8	dilu7	dilu6	dilu5	dilu4	dilu3	dilu2	dilu1	B	Reference Ab	
G	B	no Ab	dilu9	dilu8	dilu7	dilu6	dilu5	dilu4	dilu3	dilu2	dilu1	B	Test Ab	
H	B	B	B	B	B	B	B	B	B	B	B	B	Assay Buffer (B)	

Figure 8. Example plate layout showing non-clustered sample locations of test and reference antibody dilution series and wells containing assay buffer (denoted by "B") alone.

Day 1

4.C. Preparing and Adding Antibody Serial Dilutions

The instructions described here are for preparation of a single stock of 2.5-fold serial dilutions of a single antibody for analysis in triplicate (100µl of each dilution provides a sufficient volume for analysis in triplicate). Alternatively, you can prepare three independent stocks of serial dilutions to generate triplicate samples. To prepare 2.5-fold serial dilutions, you will need 200µl of each antibody at 3X the highest antibody concentration in your dose-response curve. For other dilution schemes, adjust the volumes accordingly.

1. On the day of assay, prepare an appropriate amount of assay buffer as described in Section 4.A.
2. To a sterile, clear V-bottom 96-well plate, add 200µl of reference antibody starting dilution (dilu1, 3X final concentration) to wells A11 and B11 (see Figure 9).

3. Add 200µl of test antibodies 1 and 2 starting dilution (dilu1, 3X final concentration) to wells C11 and D11, respectively (see Figure 9).
4. Add 120µl of assay buffer to other wells in these four rows, from column 10 to column 2.
5. Transfer 80µl of the antibody starting dilutions from column 11 into column 10. Mix well by pipetting. Avoid creating bubbles.
6. Repeat equivalent 2.5-fold serial dilutions across the columns from right to left through column 3. Do not dilute into column 2.
Note: Wells A2, B2, C2, and D2 contain 120µl of assay buffer without antibody as a negative control.
7. Use a multichannel pipette to transfer 25µl antibody to each well of the assay plate as indicated in Figure 8.
8. Cover the antibody dilution plate with a lid and keep the plates at ambient temperature while preparing TIM-3 Effector and Target Cells.

4.D. Preparing TIM-3 Effector and Target Cells

The thaw-and-use TIM-3 Effector and TIM-3 Target Cells included in this kit are sensitive, and care should be taken to follow the cell thawing and plating procedures exactly as described. Do not overmix or overwarm the cell reagents. No additional cell culture or cell manipulation is required or recommended. We recommend that you thaw and dilute a maximum of two vials of thaw-and-use cells at one time.

1. Label one 15ml conical tube "Target" and another 15ml conical tube "Effector." Transfer 3.6ml warm assay buffer to the "Target" tube and 4.0ml to the "Effector" tube. Set the "Effector" tube aside to be used in Step 6.
2. Remove one vial each of thaw-and-use TIM-3 Effector Cells and Target Cells from -140°C storage and transfer to the bench on dry ice. Thaw the Target Cell vial in a 37°C water bath until cells are just thawed (about 2 minutes). While thawing, gently agitate and visually inspect.
3. Gently mix the cell suspension in the vial by pipetting, and then transfer 0.9ml of cells to the 15ml conical tube labeled "Target." Mix well by gently inverting the tube 1-2 times.
4. Transfer the Target Cell suspension to a sterile reagent reservoir. To avoid cells settling to the bottom of the reservoir, immediately use a multichannel pipette to transfer 25µl of Target Cells to each well of the assay plates, according to the plate layout in Figure 8.
5. Thaw the vial of TIM-3 Effector Cells in a 37°C water bath until cells are just thawed (about 2 minutes). While thawing, gently agitate and visually inspect.
6. Gently mix the cell suspension in the vial by pipetting, and then transfer 0.5ml of cells to the 15ml conical tube labeled "Effector." Mix well by gently inverting the tube 1-2 times.
7. Transfer the TIM-3 Effector Cells to a sterile reagent reservoir. To avoid cells settling to the bottom of the reservoir, immediately use a multichannel pipette to transfer 25µl of Effector Cells to each well of the assay plates, according to the plate layout in Figure 8.
8. Add 75µl of assay buffer to each of the unused wells of the assay plates.

4.D. Preparing TIM-3 Effector and Target Cells (continued)

9. Cover the assay plates with a lid and place in a 37°C, 5% CO₂ incubator for 16–24 hours.

Note: We have found that shorter incubation times (16–18 hours) result in the greatest light output (RLU) while longer incubation times (22–24 hours) minimize day-to-day variability. Incubation time can be optimized to fit your needs.

10. Thaw the Bio-Glo-NL™ Luciferase Assay Buffer at room temperature (do not exceed 25°C) during the 16–24 hour induction period of the assay.

Recommended Plate Layout for Antibody Dilutions Prepared from a Single Antibody Stock													
	1	2	3	4	5	6	7	8	9	10	11	12	
A		no Ab	dilu9	dilu8	dilu7	dilu6	dilu5	dilu4	dilu3	dilu2	dilu1		Reference Ab
B		no Ab	dilu9	dilu8	dilu7	dilu6	dilu5	dilu4	dilu3	dilu2	dilu1		Reference Ab
C		no Ab	dilu9	dilu8	dilu7	dilu6	dilu5	dilu4	dilu3	dilu2	dilu1		Test Ab 1
D		no Ab	dilu9	dilu8	dilu7	dilu6	dilu5	dilu4	dilu3	dilu2	dilu1		Test Ab 2
E													
F													
G													
H													

Figure 9. Example plate layout showing antibody serial dilutions.

Day 2

4.E. Preparing and Adding Bio-Glo-NL™ Reagent

We recommend preparing the Bio-Glo-NL™ Luciferase Assay Reagent immediately before use. Ensure that the Bio-Glo-NL™ Luciferase Assay Buffer is equilibrated to room temperature (do not exceed 25°C) before reconstituting the reagent. Do not store the reconstituted reagent. Once reconstituted, the reagent will lose 10% activity in approximately 8 hours at room temperature.



Note: The TIM-3 Bioassay is compatible only with the Bio-Glo-NL™ Luciferase Assay Reagent. **Do not** use the Bio-Glo™ Luciferase Assay Reagent (Cat.# G7940, G7941) with the TIM-3 Bioassay.

1. Remove the Bio-Glo-NL™ Luciferase Assay Substrate from –20°C storage and mix by pipetting. Briefly centrifuge the tubes if the substrate has collected in the cap or on the sides of the tubes.

2. Prepare the desired amount of reconstituted Bio-Glo-NL™ Luciferase Assay Reagent by combining one volume of substrate with 50 volumes of buffer. For example, if the experiment requires 10ml of reagent, add 200µl of substrate to 10ml of buffer. Ten milliliters of Bio-Glo-NL™ Reagent is sufficient for 120 wells (two assay plates, using the inner 60 wells of each plate).
3. Remove assay plates from the incubator after the incubation period and equilibrate to room temperature for 10–15 minutes.
4. Using a manual multichannel pipette, add 75µl of Bio-Glo-NL™ Reagent to the inner 60 wells of the assay plates, taking care not to create bubbles.
5. Add 75µl of Bio-Glo-NL™ Luciferase Assay Reagent to wells B1, C1 and D1 of each assay plate to measure background signal.
6. Wait 5–10 minutes, then measure the luminescence in a GloMax® Discover System or a plate reader with glow-type luminescence reading capabilities. The luminescence intensity will decay gradually, with a signal half-life of approximately 120 minutes at room temperature.

Note: Varying the Bio-Glo-NL™ incubation time will affect the raw RLU values but should not significantly change the IC₅₀ value and fold maximum inhibition.

4.F. Data Analysis

1. Determine plate background by calculating the average relative light units (RLU) from wells B1, C1 and D1.
2. Calculate percent inhibition = $1 - \frac{\text{RLU (induced-background)}}{\text{RLU (no antibody control-background)}} \times 100$
3. Graph data as RLU versus Log₁₀ [antibody] and percent inhibition versus Log₁₀ [antibody]. Fit curves and determine the IC₅₀ value of antibody response using appropriate curve fitting software (such as GraphPad Prism® software).



5. Troubleshooting

For questions not addressed here, please contact your local Promega Branch Office or Distributor. Contact information available at: www.promega.com. Email: techserv@promega.com

Symptoms

Causes and Comments

Low luminescence measurements (RLU readout)

Ensure that you are using Bio-Glo-NL™ Reagent in the assay. The TIM-3 Bioassay is **not compatible** with Bio-Glo™ Reagent.

Choose an instrument designed for plate-reading luminescence detection. Instruments designed primarily for fluorescence detection are not recommended. Luminometers measure and report luminescence as relative values, and actual RLU numbers will vary between instruments.

Some models of luminometers with low sensitivity should be avoided. If using a reader with an adjustable gain, we recommend a **high gain setting**.

Insufficient cells per well or low cell viability can lead to low RLU. Handle and plate the cells according to the instructions to ensure a sufficient number of viable cells per well.

Low activity of Bio-Glo-NL™ Reagent leads to low RLU. Store the Bio-Glo-NL™ Substrate and Bio-Glo-NL™ Buffer as directed, and handle the Bio-Glo-NL™ Reagent according to the instructions. For best results, prepare immediately before use.

Weak assay response (low percent inhibition)

Optimize the concentration range of your test sample(s) to achieve a full dose response with complete upper and lower asymptotes. The IC₅₀ value obtained in the TIM-3 Bioassay may vary from the IC₅₀ value obtained using other methods such as primary T cell-based assays.

TIM-3 Effector cells are sensitive to shear forces and should be handled gently after thawing or during resuspension. Avoid excessive trituration and never mix the cells by vortexing.

Nonspecific inhibition of reporter activity with control antibodies

For best results, use only purified antibodies. Components present in unpurified supernatants may inhibit the assay.

Symptoms

Variability in assay performance

Causes and Comments

Assay performance can be affected by variations in cell health, especially during thawing. Handle the cells consistently according to the instructions in this manual. Keep the cells at or below -140°C after you receive them and transfer them to dry ice for transportation before use.

Optimize assay incubation time. We have observed that shorter incubation times (16–18 hours) result in the greatest light output, while longer incubation times (22–24 hours) produce the least day-to-day variability. Ensure that incubation times are consistent between assays.

6. References

1. Mahoney, K.M., Rennert, P.D. and Freeman, G.J. (2015) Combination cancer immunotherapy and new immunomodulatory targets. *Nat. Rev. Drug Discov.* **14**, 561–84.
2. Melero, I. *et al.* (2015) Evolving synergistic combinations of targeted immunotherapies to combat cancer. *Nat. Rev. Cancer* **15**, 457–72.
3. Sakuishi, K. *et al.* (2010) Targeting TIM-3 and PD-1 pathways to reverse T cell exhaustion and restore anti-tumor immunity. *J. Exp. Med.* **207**, 2187–94.
4. Guo, Z. *et al.* (2013) Combined TIM-3 blockade and CD137 activation affords the long-term protection in a murine model of ovarian cancer. *J. Transl. Med.* **11**, 215.
5. Lee, J. *et al.* (2011) Phosphotyrosine-dependent coupling of TIM-3 to T-cell receptor signaling pathways. *Mol. Cell. Biol.* **31**, 3963–74.
6. Phong, B.L. *et al.* (2015) TIM-3 enhances Fc ϵ RI-proximal signaling to modulate mast cell activation. *J. Exp. Med.* **212**, 2289–304.
7. Zhu, C. *et al.* (2005) The Tim-3 ligand galectin-9 negatively regulates T helper type 1 immunity. *Nat. Immunol.* **6**, 1245–52.
8. Huang, YH. *et al.* (2015) CEACAM1 regulates TIM-3-mediated tolerance and exhaustion. *Nature* **517**, 386–90.
9. Nakayama, M. *et al.* (2009) Tim-3 mediates phagocytosis of apoptotic cells and cross-presentation. *Blood* **113**, 3821–30.
10. Sabatos-Peyton, C.A. *et al.* (2017) Blockade of Tim-3 binding to phosphatidylserine and CEACAM1 is a shared feature of anti-Tim-3 antibodies that have functional efficacy. *Oncoimmunology* **7**, e1385690.
11. Grailer, J. **et al.** (2019) Releasing the brakes: Quantitative cell-based bioassays to advance individual and combination immune checkpoint immunotherapy. *PEGS Boston: The Essential Protein Engineering Summit*, Poster# B116.



7. Appendix

7.A. Representative Assay Results

The following data were generated using the TIM-3 Bioassay using Control Ab, Anti-TIM-3 (Figure 10).

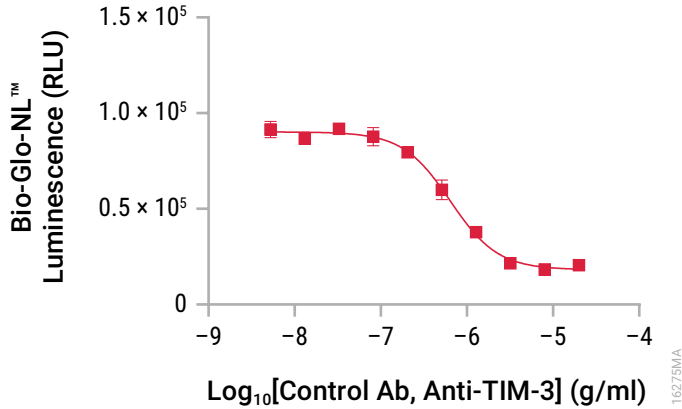


Figure 10. The TIM-3 Bioassay measures the activity of Control Ab, Anti-TIM-3. TIM-3 Target and Effector Cells, and a titration of Control Ab, Anti-TIM-3, were plated together and incubated overnight. After incubating for 20 hours, Bio-Glo-NL™ Reagent was added and luminescence was measured using the GloMax® Discover System. Data were fitted to a four-parameter logistic curve using GraphPad Prism® software. The IC₅₀ was 640ng/ml and the maximum inhibition was 79.8%.

7.B. Composition of Buffer

Assay Buffer

- 95% RPMI 1640 with L-glutamine and HEPES
- 5% FBS

8. Summary of Changes

The following changes were made to the 5/26 revision of this document:

1. Removed Section 7.C, Related Products.
2. Made minor text edits and formatting changes.

^(a)NOT FOR MEDICAL DIAGNOSTIC USE. FOR IN VITRO USE ONLY. BY USE OF THIS PRODUCT, RECIPIENT AGREES TO BE BOUND BY THE TERMS OF THIS LIMITED USE STATEMENT. If the recipient is not willing to accept the conditions of this limited use statement, and the product is unused, Promega will accept return of the unused product and provide the recipient with a full refund.

This product may not be further sold or transferred by the recipient and may be used only by the recipient, and then only for (1) research use; (2) discovery, development and monitoring of biologic drugs and vaccines; (3) quality assurance testing of biologic drugs and vaccines; and (4) product release assays for biologic drugs and vaccines. No other commercial use is allowed. "Commercial use" means any and all uses of this product by recipient for monetary or other consideration, including providing a service, information or data to unaffiliated third parties, and resale of this product for any use. Recipient has no right to propagate, modify, derivatize, genetically engineer or otherwise create variations of the cells or genes stably transfected within the cells. In addition, recipient must use Bio-Glo-NL™ Luciferase Assay System purchased from Promega Corporation for all luminescence assays using this product or contact Promega to obtain a license for use of this product with reagents other than Promega's. PROMEGA MAKES NO REPRESENTATIONS OR WARRANTIES OF ANY KIND, EITHER EXPRESSED OR IMPLIED, INCLUDING AS TO MERCHANTABILITY OR FITNESS FOR A PARTICULAR PURPOSE WITH REGARDS TO THIS PRODUCT. The terms of this agreement shall be governed under the laws of the State of Wisconsin, USA.

^(b)U.S. Pat. Nos. 8,557,970, 8,669,103, 9,777,311, 9,840,730, 9,951,373, 10,233,485, 10,633,690, 10,774,364, 10,844,422, 11,365,436, 11,661,623, 11,667,950; European Pat. Nos. 2456864, 2635595, 2990478, 3181687, 3409764; Japanese Pat. Nos. 6038649, 6155424, 6227615, 6374420, 6539689; and other patents and patents pending.

^(c)Licensed from Lonza Cologne GmbH under U.S. Pat. Nos. 7,700,357, 8,192,990 and 8,003,389, European Pat. Nos. 1297119, 1522587, 1607484 and 1741778 and other pending and issued patents.

^(d)Patent Pending.

© 2019–2026 Promega Corporation. All Rights Reserved.

GloMax and Lumit are registered trademarks of Promega Corporation. Bio-Glo, Bio-Glo-NB and Bio-Glo-NL are trademarks of Promega Corporation.

MANTIS is a registered trademark of Formulatrix, Inc. GraphPad Prism is a registered trademark of GraphPad Software, Inc.

Products may be covered by pending or issued patents or may have certain limitations. Please visit our website for more information.

All prices and specifications are subject to change without prior notice.

Product claims are subject to change. Please contact Promega Technical Services or access the Promega online catalog for the most up-to-date information on Promega products.